



Your Global Marking Partner since 1940

Sharing our 80 years knowledge
in Industrial Marking with you



OUR HISTORY

Automator was born in 1940 and since then we have been focused and specialized in indenting marking systems (machinery to mark any kind of material surface with a little/medium/high deformation of the surface).

We are a family owned company with the headquarters in Corsico, Italy.



Your Global Marking Partner since 1948

OUR VISION



A global technology company providing marking solutions to clientele of all around the world.
One global supplier that is present 24/24 hours and 7days a week for 365 days a year.
Assistance, training and sales can be found just anywhere you are



Your Global Marking Partner since 1948

OUR FAMILY

We have 14 Automator branches and JV and a wide distribution network in the following countries:

EUROPE: Portugal, Spain, France, Switzerland, Italy, Slovenia, Croatia, Serbia, Bosnia Herzegovina, Hungary, Bulgaria, Poland, Czech Republic, Slovakia, Ukraine, Russia, Sweden, Finland, Norway, Denmark, Romania, Greece, Great Britain, Ireland, Austria, Belarus, Estonia, Latvia,

ASIA: Turkey, Iran, India, Thailand, Vietnam, Taiwan, China, Japan, Malaysia, United Arab Emirates, South Korea, Israel, Kazakhstan, Uzbekistan,

OCEANIA: Australia, Indonesia, Singapore, New Zealand, Brunei, Philippines

AMERICAS: Canada, USA, Mexico, Argentina, Brazil, Chile, Venezuela, Colombia, Uruguay, Paraguay, Panama, Ecuador, Colombia

AFRICA: South Africa, Kenya, Egypt, Morocco, Tunisia, Algeria, Congo, Angola, Nigeria, Mozambique



Your Global Marking Partner since 1948

OUR NETWORK



Branches in ITALY, USA, CANADA, SWITZERLAND, SLOVENIA, SLOVAKIA, CZECH REPUBLIC, BULGARIA, RUSSIA, UKRAINE, CHINA, AUSTRALIA, COLOMBIA, SPAIN



Your Global Marking Partner since 1948

OUR CUSTOMERS

All manufacturing companies, artworkers, integrators, machining tools providers, project developers, bigger systems production companies and...

YOU

Probably you already are our customer,
perhaps you still don't know



Your Global Marking Partner since 1948

10 GOOD REASONS TO MARK

1. Laws and regulations - Industrial Marking is mandatory to commercialize your products in different markets. Every country has specific laws.
2. Marketing - Your products have to be "unique" and recognizable between a lot of similar products or "pirate products" in the same market.
3. Informations - All useful informations about your products have to be printed on the right part and component, to make the consumer aware about assets and limitations of use
4. Anti-counterfelt strategies- Industrial Marking can protect your products and brand from counterfelt and commercial piracy
5. Warranty - Industrial Marking can help you to manage the warranty of your products, without mistakes and misunderstandings
6. Tracking - Marking a part is the only way to track it step by step during all the production and supply chain, from the factory to the final customer all over the world
7. Beauty - A beautiful product can be launched in the market and sold easier than a "not so good looking" one
8. Quality - A manufacturer is responsible for the quality of all its products. A good marking is the only way to track the quality level of them
9. Product Liability - Marking your products can protect you from legal actions in case of defective parts or not original components
10. Defective Components Law - Industrial marking helps you to detect defective parts and solve the replacement issues



Your Global Marking Partner since 1948

A COMPLETE RANGE

We carry a complete range of industrial marking systems:

- Impact presses, with types, dies, characters and numbering heads
- Rolling machine
- Hot foil markers
- Dot peen marking systems
- Scribe machines
- Last generation of ultra compact “all in one” lasers
- Fiber lasers, green lasers and cold marking green lasers
- Marking and reading systems
- 2D code, datamatrix

LASER

DOT PEEN & SCRIBE

ROLLING

IMPACT

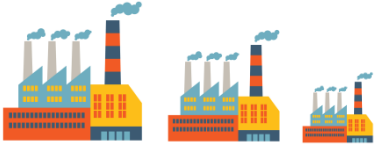
PRESSES

HOT FOIL

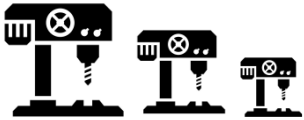


Your Global Marking Partner since 1948

OUR NUMBERS



more than **15.000** customers worldwide



more than **120.000** Automator machines daily working



224 different fields of application



35 spoken languages*



more than **25** million Euro group turnover*



partecipating at exhibitions/shows nearly each **2** weeks*



Your Global Marking Partner since 1948

* Not including partnes,distributors and resellers

FIELDS IN WICH WE ARE ACTIVE

Actually we sell in more than **224** different fields, for example:

**Steel mills – Automotive – Glass – Jewelry – Gold – Watches
Home furniture – Furs – Pens – Blades – Glasses – Turbines – Batteries –
Electronics – Fashion – Cattle tags – Ski – Golf equipment – Valves – Culterly
– Memorial – Trophies – Avionic – Armaments – Oil and gas – Pneumatics –
Food – Packaging – Leasure – machine tools – Keys and locks – Robotics –
Heavy metal industry – Surgical/othodental – Security**

...and many others

In other words

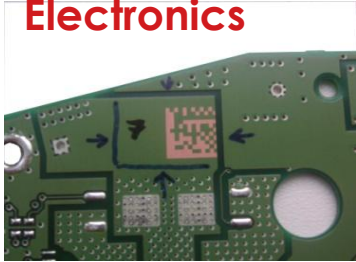
we mark all but water and air
we mark all but water and air



Your Global Marking Partner since 1948

Some fields that we are serving

Electronics



Food



Raw Materials



Fashion



Machine Builders



Aerospace



Automotive



Defense



Consumer Products
Recreation

Heavy Equipment
& Construction



Medical



Your Global Marking Partner since 1948

Just a few
customers of us...



Das Auto.



BANK OF ENGLAND

SIEMENS

Siemens Wind Power

SHIMANO

ABB



AIRBUS



NOKIA
Connecting People



Coca-Cola

Schlumberger



ROLEX



ALCOA



LEICHT



ThyssenKrupp



Pilsner Urquell



PATEK PHILIPPE
GENEVE



GE Oil & Gas



tyco
Electronics



U.S. AIR FORCE



Bayer



Panasonic
ideas for life

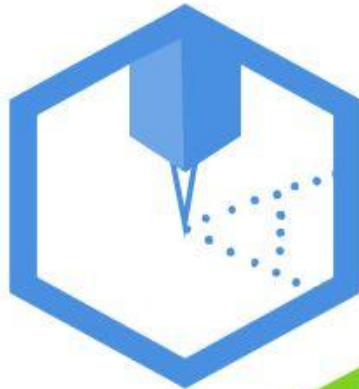
IBM



Your Global Marking Partner since 1948

ALL MARKING TECHNOLOGIES AND APPLICATIONS

DOT PEEN



LASER



IMPACT



SCRIBE



ROLL



HOT FOIL

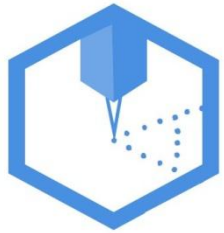


CHEM ETCH



Your Global Marking Partner since 1948

OUR PRODUCTS



DOT PEEN MARKING MACHINES

ADP25120
25x120mm



PORTABLE
VERSIONS



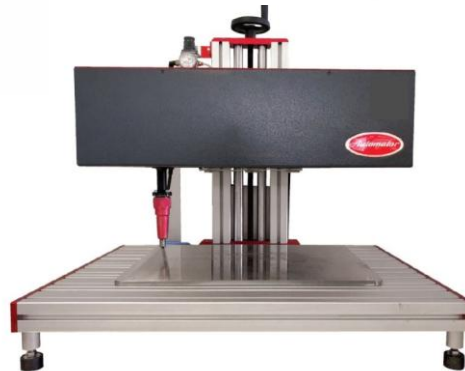
CONVERIBLE
KIT



ADP5090
50X90mm



ADP300400
300X400 mm



ADP120160
120X160mm

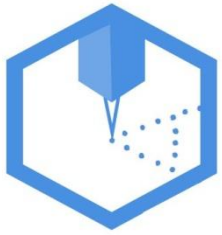


ADP2560
25x60 mm



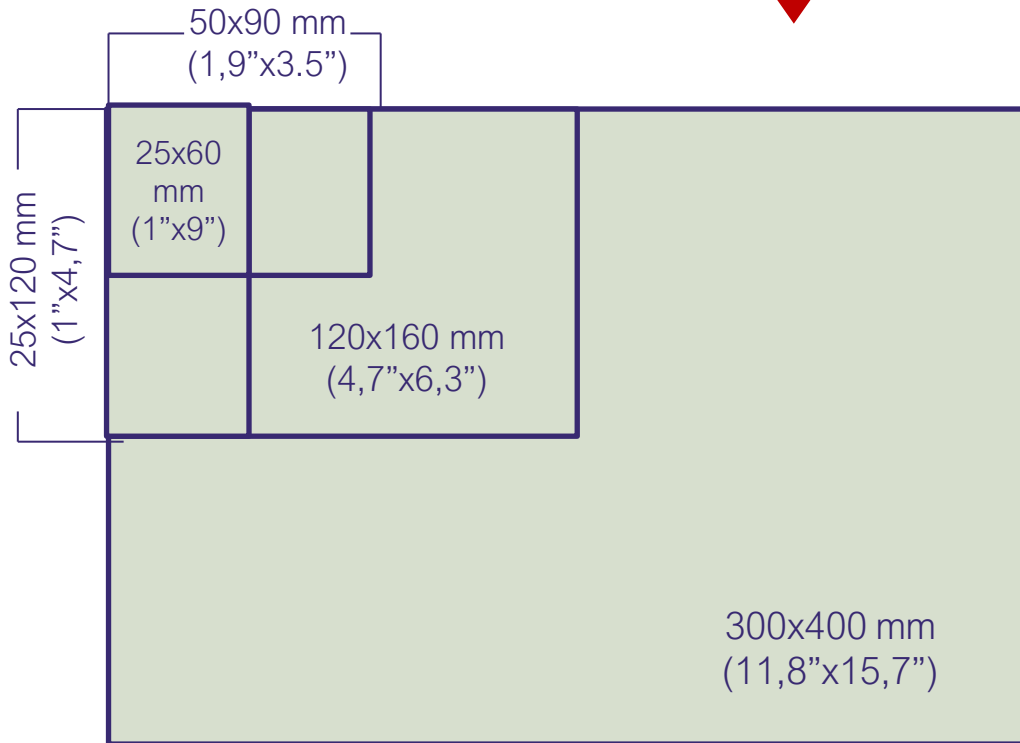
Your Global Marking Partner since 1948

OUR PRODUCTS

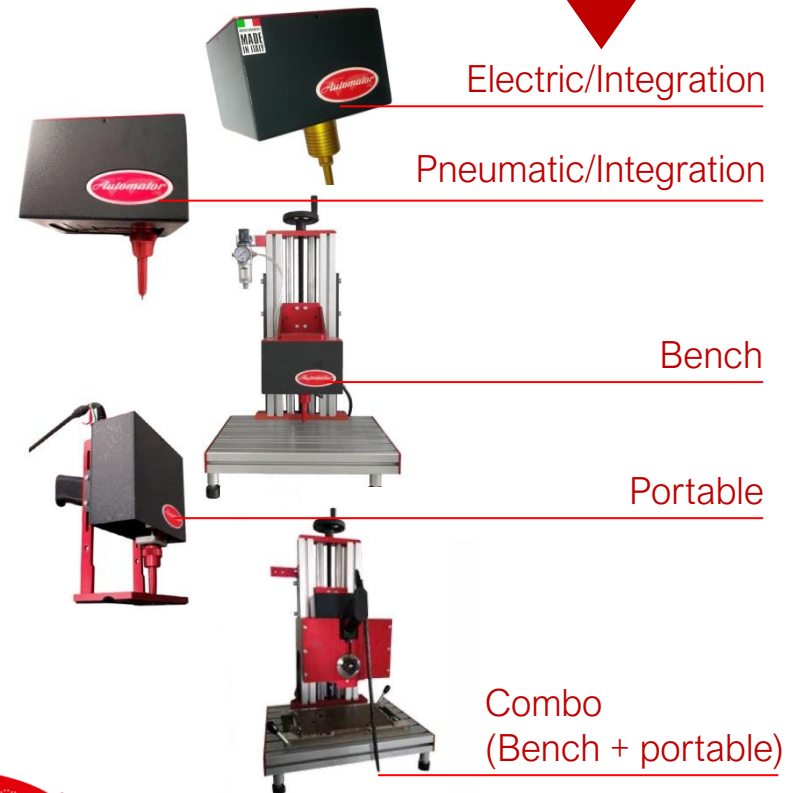


DOT PEEN MARKING MARKING AREAS & APPLICATIONS

MARKING AREAS



APPLICATIONS



Your Global Marking Partner since 1948

OUR PRODUCTS



DOT PEEN MARKING PINS AND CARTRIDGES

All Automator dot peen markers can mount all these pins:



3 - 6 mm dot



12 mm dot



18 mm dot



3 - 6 mm XL dot



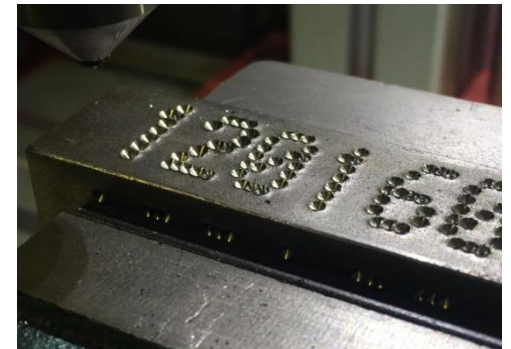
4 mm vibro



3 mm vibro



3 mm electric

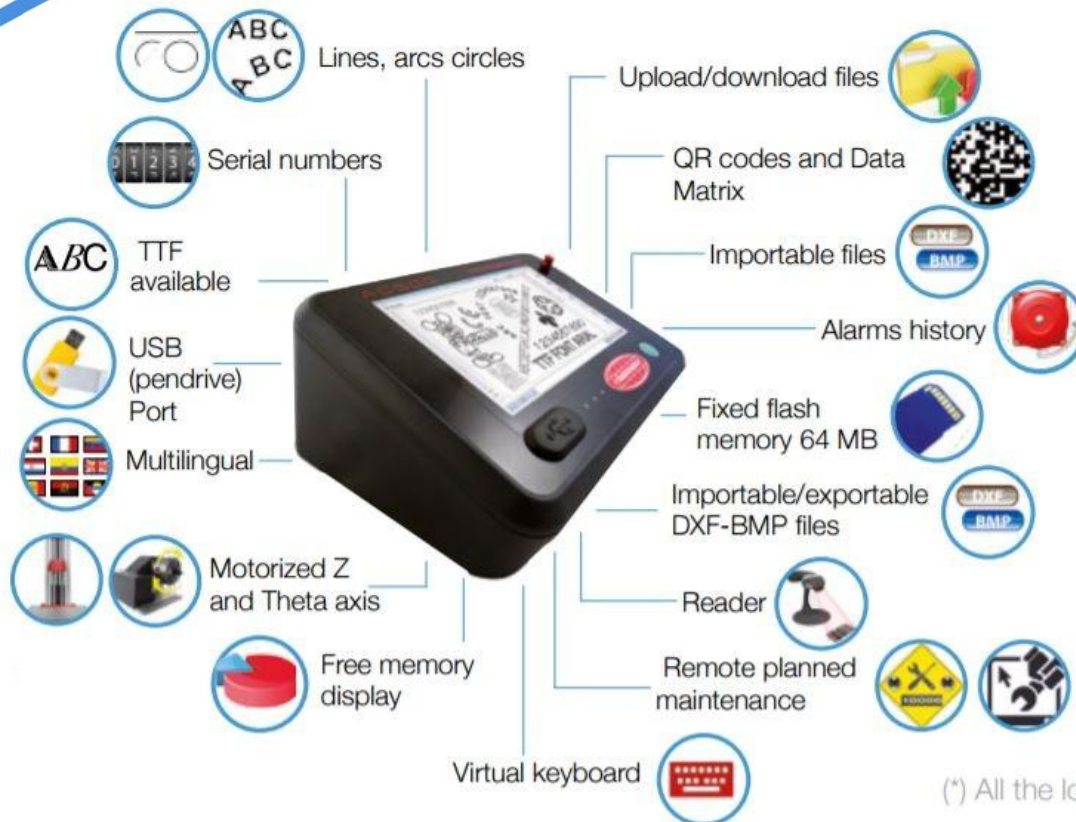


Your Global Marking Partner since 1948

OUR PRODUCTS



DOT PEEN MARKING AC500 UNIVERSAL CONTROLLER



The AC500 controller can be used with a PC or alone with the special Automator MarkAlone™ technology.

The 7" touchscreen makes the many software's features easy to manage and use. For the first time, industrial marking reaches the maximum in efficiency and intuitive simplicity.

Optional external communications protocols



(*) All the logos are property of their own companies



Your Global Marking Partner since 1948

OUR PRODUCTS



LASER MARKING CLASS 4 MARKING LASERS



nanoVISII – Self-adjustable frequency



VIS – 10, 20, 30, 40W



greenVIS – 5, 10W



FYBRAII – Fiber laser 21, 31, 52W



ALPHA CO2 – 10, 25, 50, 100W



PORTABLE LASERS



Your Global Marking Partner since 1948

OUR PRODUCTS



LASER MARKING KINDS OF LASER SOURCES



nanoVISII

Automator
aWave
technology

YAG



VIS

10-20-30-40W
YVO4
@ 1064nm

YAG



greenVIS

5-10W
green
@ 532nm

YAG



FYBRAII

21-31-52W
ND:YB
@ 1064nm

Active Fiber



ALPHA

10-25-50-100W
INTRA
@ 10064nm

CO2



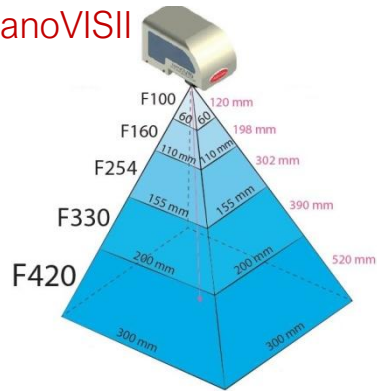
Your Global Marking Partner since 1948

OUR PRODUCTS

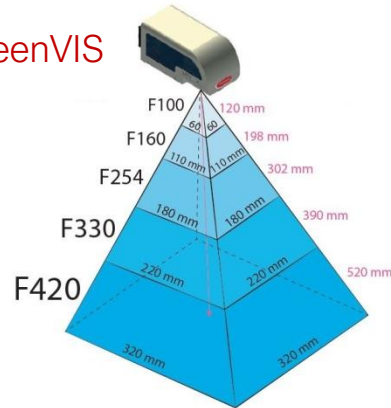


LASER MARKING MARKING AREAS

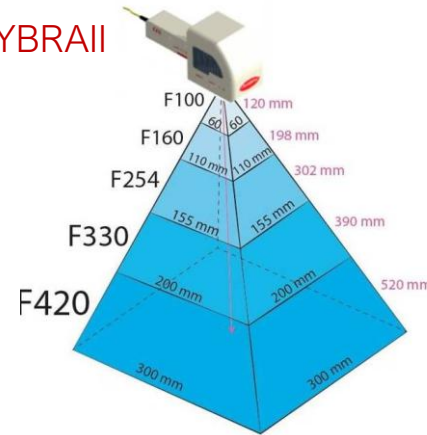
nanoVISII



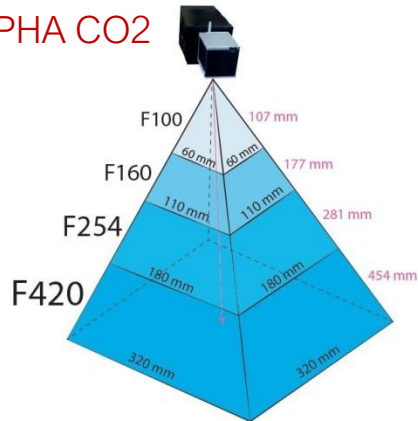
VIS & greenVIS



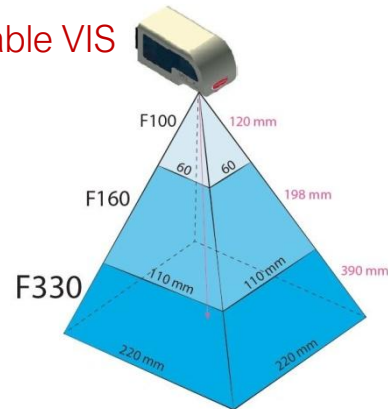
FYBRAII



ALPHA CO2



Portable VIS



OUR PRODUCTS



LASER MARKING CLASS1 SYSTEMS

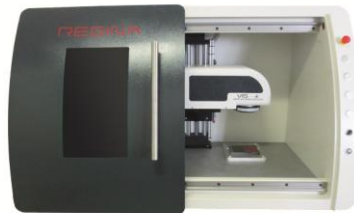
OMEGA

Loading area: 340x340 mm
(13,5"x13,5")



REGINA

Loading area: 400x400 mm
(15,7"x15,7")



ARENA

Loading area: 550x440mm
(12,6"x17,3")



REXII

Loading area: 700x900mm
(27,5"x25,4")



SUPERIOR - 800x800mm
(31,4"x31,4")



PRIMA

Loading area: 600x600 mm
(23,6"x23,6")



Your Global Marking Partner since 1948

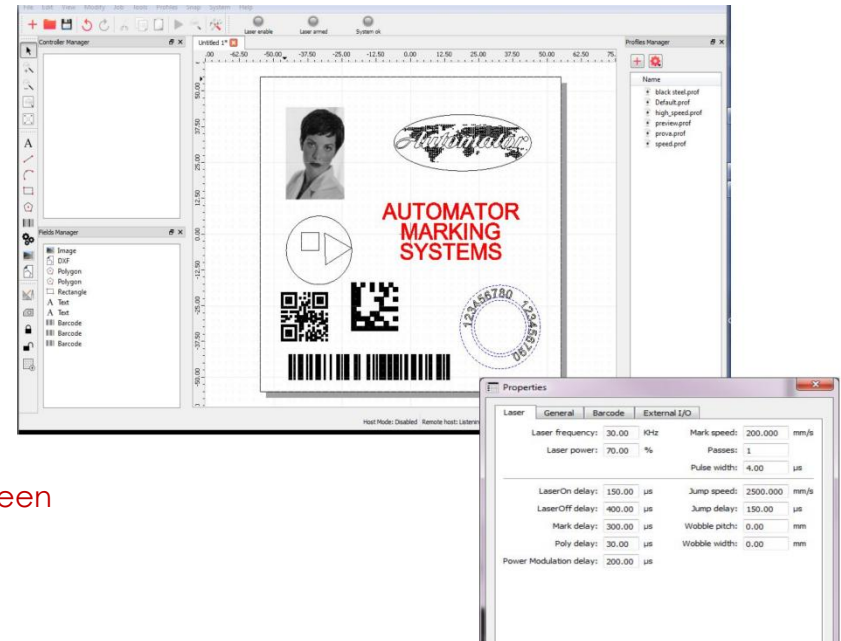
OUR PRODUCTS



LASER MARKING euGENIUS™ SOFTWARE

EuGENIUS™ Software has been projected and developed by Automator highly specialized team, consolidating the marked requests in the long term marking knowhow of almost 80 years in marking. Versatile in the applications and friendly to use, even by operators without highly technical specific training, such as CAD knowledge. **Automator is the only company worldwide working with this “state-of-the-art” marking software!**

- Multilanguage menu
- Management barcode "Datamatrix", 2D code, QR code, PDF Queues
- Easy import of vector drawings, DXF
- Easy import of raster graphics, BMP, JPEG, .JPG, GIF
- Complete set of laser parameters such as speed or power laser
- Texts, Text arcs, text on curved lines,
- Lines, rectangles, polygons, circles and arcs
- TTF Font ® (windows property)
- Graphic preview
- Texts with date, serial numbers, shift codes and year/month/day
- Multi fillings or single profile markings
- Templates (object to be marked as background)
- Proportion scale, move, rotate, group creation of each object on the screen
- Quick Test for an easy identification of the best laser parameters
- Automation & object tiling
- External axis commanded by software
- Shutter control
- Easy diagnosis of troubleshootings

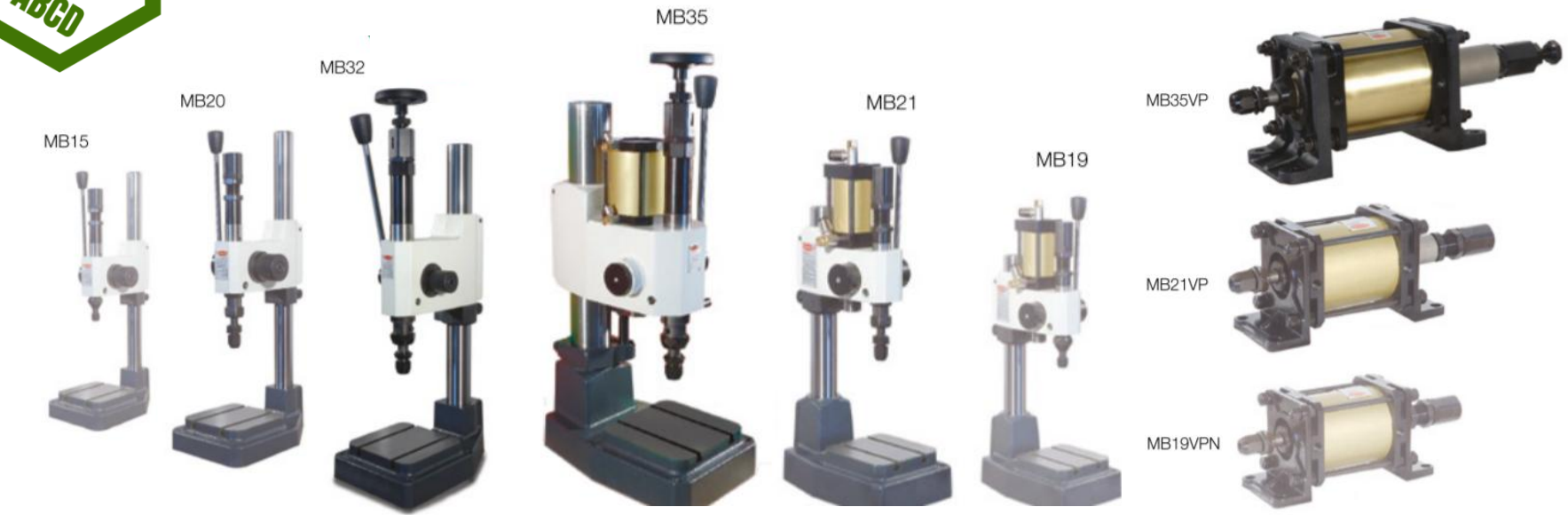


Your Global Marking Partner since 1948

OUR PRODUCTS



IMPACT MARKING MANUAL & PNEUMATIC MACHINES



All kinds of types, typeholders, numbering heads and so on...



Your Global Marking Partner since 1948

OUR PRODUCTS



SCRIBE MARKING SILENT & CONTINUOUS MARKERS



ASM40150
40x150 mm



ASM6090
60x90 mm



Your Global Marking Partner since 1948

OUR PRODUCTS



SCRIBE MARKING SILENT & CONTINUOUS MARKERS

40x150 mm
(1,5"x5,9")



ASM40150

60x90 mm
(2,3"x3,5")



ASM6090



Your Global Marking Partner since 1948

OUR PRODUCTS



ROLL MARKING FOR ROUND SURFACES

From 1 mm up to 1 m diameters!



MB41E



MB41N



MB71E



MB76EP90°



MB71U



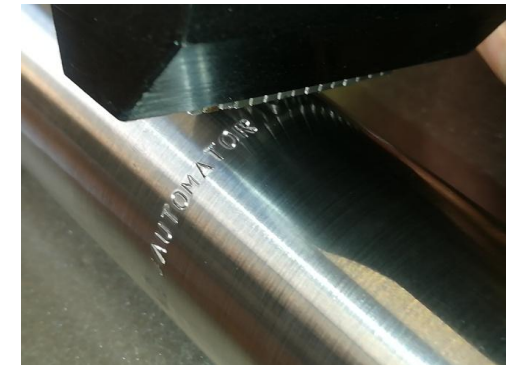
MB71CE



MB76EPV



IB71EP



Your Global Marking Partner since 1948

OUR PRODUCTS

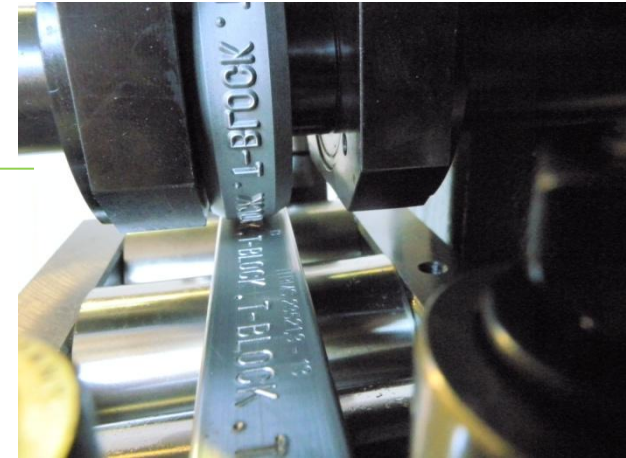


ROLL MARKING FOR ROUND SURFACES



MB71CE

Marking in continuous on bars



MB76 EP 90°

Different programs for marking up to 1 m diameters



Your Global Marking Partner since 1948

OUR PRODUCTS



HOT FOIL MARKING FOR LEATHER, FABRICS & WOODS



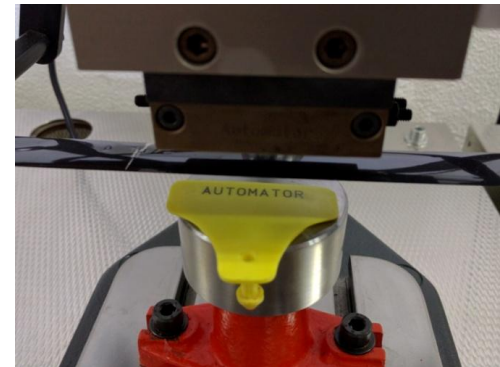
MB21E



MB21EU



MB20E



Your Global Marking Partner since 1948

OUR PRODUCTS



CHEM ETCH THE EASIEST WAY TO MARK ON METALS



Your Global Marking Partner since 1948

OUR PRODUCTS



Automator Group green philosophy aims to consider recycling when producing machinery



We also engineer all our machines for use with the lowest possible energy consumption



All our machines are engineered and manufactured with the target of having a green company, so using energy coming from solar power, using bio paint and all possible care of the environment



We are worldwide certified ISO 9001 products certified and IQ Net since 2003



We are UCIMU certified company (UCIMU is member of CECIMU)



Your Global Marking Partner since 1948



Your Global Marking Partner since 1940

Automator Marking Systems

Via Meucci 8, 20094
Corsico (MI) Italy
Tel: + 39 02.48601445
Fax +39 02.48601503

pini@automator.com
www.automator.com



Your Global Marking Partner since 1948